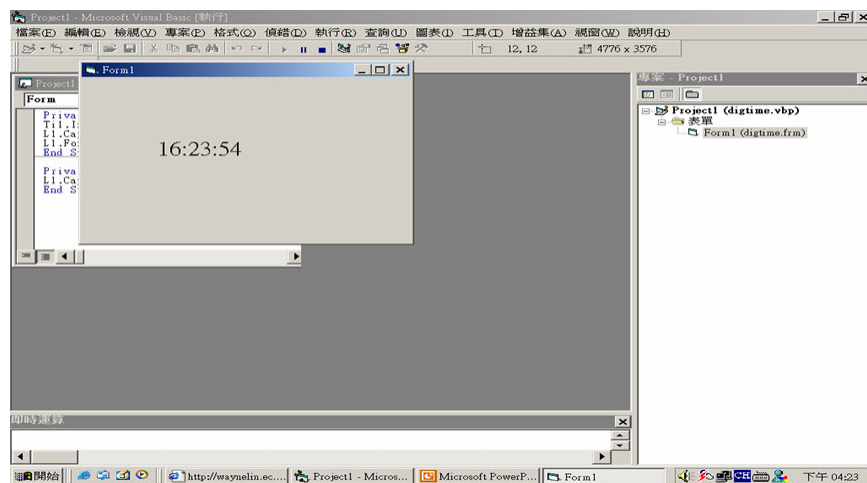


VB小時鐘應用

資科系
林偉川

數位時鐘執行結果



Timer屬性(VB 6)

- Interval屬性 → 設定時間之間距
(每單位 $1*10^{-3}$ 秒)
- _Timer事件為每當時間間距到達時要作之事

系統函數

- Now → 今天日期及時間
- Date → 今天日期
- Time → 今天至目前為止的時間
- Timer → 今天至目前為止時間的秒數

3

Timer屬性(VB.NET)

- Interval屬性 → 設定時間之間距
(每單位 $1*10^{-3}$ 秒)
- **.Enabled = True** → 啟動計時功能
- **_tick**事件為每當時間間距到達時要作之事

系統函數

- Now → 今天日期及時間
- Today → 今天日期
- TimeOfDay → 今天至目前為止的時間

4

配合標籤物件動作(VB 6)

```
Private Sub Form_Load()  
    Ti1.Interval = 1000  
    L1.Caption = Time$  
    L1.FontSize = 18  
End Sub  
  
Private Sub Ti1_Timer()  
    L1.Caption = Time$  
End Sub
```

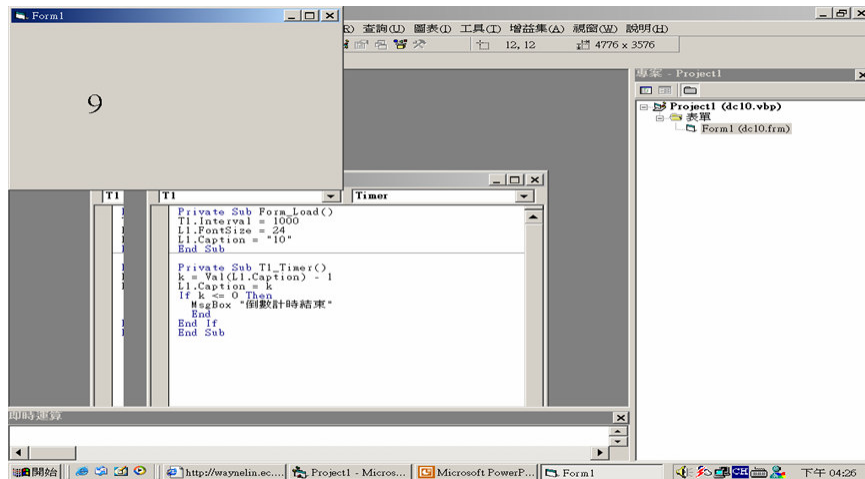
5

配合標籤物件動作(VB.NET)

```
Private Sub Form_Load()  
    L1.Text = TimeOfDay  
    T1.Interval = 100  
    T1.Enabled = True  
    L1.ForeColor = Color.Red  
End Sub  
  
Private Sub T1_Tick()  
    L1.Text = TimeOfDay  
End Sub
```

6

倒數計時執行結果



7

倒數計時配合標籤物件的動作(VB 6)

```
Private Sub Form_Load()  
    T1.Interval = 1000  
    L1.FontSize = 24  
    L1.Caption = "10"  
End Sub
```

```
Private Sub T1_Timer()  
    k = Val(L1.Caption) - 1  
    L1.Caption = str(k)  
    If k <= 0 Then  
        MsgBox "倒數計時結束"  
    End  
End If  
End Sub
```

8

倒數計時配合標籤物件的動作(VB.NET)

```
Private Sub Form_Load()  
    T1.Interval = 1000: T1.Enabled = True  
    L1.Text = "10": L1.ForeColor = Color.Blue  
End Sub  
  
Private Sub T1_Timer()  
    Dim k  
    If Val(L1.Text) > 0 Then  
        k = Val(L1.Text) - 1: L1.Text = Str(k)  
        If k = 0 Then MsgBox("倒數計時結束"): End  
    End If  
End Sub
```

9

某日期倒數計時執行結果



10

日期的動作(VB 6)

- Datevalue函數
 - Datevalue(Now) → 今天日期
 - Datevalue(CC) → 輸入之日期
 - Datevalue(cc) - Datevalue(now) → 日期差
 - Timer() → 目前的時間轉成秒數
 - Ts = Int(86400 - Timer()) ‘ 今天尚餘時間之總秒數
 - th = Ts \ 3600 ‘ 今天尚餘小時數
 - tm = Ts \ 60 - th * 60 ‘ 今天尚餘分鐘數
 - Ts = Ts Mod 60 ‘ 今天尚餘秒數

11

日期的動作(VB.NET)

- Datevalue函數
 - Datediff(“d/h/n/m/s”,d1,d2) → 日子相差
 - d → 相差之天數
 - h → 相差之小時
 - n → 相差之分鐘
 - m → 相差之月
 - s → 相差之秒數

12

某日期倒數計時程式的變化(VB 6)

```
Private Sub Form_Load()  
    MsgBox Now  
    MsgBox Date  
    c = InputBox("請輸入日期", "input date", "2005  
        /1/1")  
    MsgBox DateValue(c) & "--" & DateValue(Now)  
    td = DateValue(c) - DateValue(Now) - 1 ' 天數
```

13

某日期倒數計時程式的變化(VB 6)

```
Ts = Int(86400 - Timer()) ' 今天尚餘秒數  
th = Ts \ 3600  
tm = Ts \ 60 - th * 60  
Ts = Ts Mod 60  
tmp = td & " 天"  
L2.Caption = tmp & th & "小時" & Chr(13) & tm  
    & "分鐘" & Ts & "秒"  
L1.Caption = "距離" + c + Chr(13) + "尚有時間為  
    "
```

14

某日期倒數計時程式的變化(VB 6)

```
T1.Interval = 1000
L2.FontSize = 18
L1.FontSize = 18
L2.BackColor = QBColor(4)
L1.BackColor = QBColor(3)
Form1.BackColor = QBColor(2)
End Sub
```

15

某日期倒數計時程式的變化(VB 6)

```
Private Sub T1_Timer()
Ts = Int(86400 - Timer()) ' 今天尚餘秒數
th = Ts \ 3600
tm = Ts \ 60 - th * 60
Ts = Ts Mod 60
L2.Caption = tmp & th & "小時" & Chr(13) & tm
& "分鐘" & Ts & "秒"
End Sub
```

16

某日期倒數計時程式的變化(VB.NET)

```
Dim t As String
Private Sub Form1_Load(ByVal sender As
System.Object, ByVal e As System.EventArgs) Handles
MyBase.Load
t = InputBox("請輸入未來時間?", "輸入時間")
L1.Text = "輸入時間:" & t
L2.Text = "現在時間:" & Now
L3.Text = "時間相差:" & DateDiff("d", Now, t) & "天"
Dim hh = Hour(Now) : Dim mm = Minute(Now)
Dim ss = Second(Now)
L2.Text &= " " & hh & ":" & mm & ":" & ss
L3.Text &= 23 - hh & ":" & 59 - mm & ":" & 59 - ss
```

17

某日期倒數計時程式的變化(VB.NET)

```
T1.Interval = 1000: T1.Enabled = True
End Sub
Private Sub T1_Tick(ByVal sender As Object, ByVal e As
System.EventArgs) Handles T1.Tick
L2.Text = "現在時間:" & Today
L3.Text = "時間相差:" & DateDiff("d", Now, t) & "天"
Dim hh = Hour(Now): Dim mm = Minute(Now)
Dim ss = Second(Now)
L2.Text &= " " & hh & ":" & mm & ":" & ss
L3.Text &= 23 - hh & ":" & 59 - mm & ":" & 59 - ss
End Sub
```

18

某日期倒數計時程式的變化(VB.NET)

```
Dim dd, hh, mm, ss, inpd
Private Sub Form1_Load(ByVal sender As System.Object, ByVal e As System.EventArgs) Handles MyBase.Load
    Timer1.Interval = 1000
    inpd = InputBox("請輸入一個未來日期", "輸入日期", "2005/12/6")
    L3.Text = "距離" & inpd & "尚有時間為"
    dd = DateDiff("d", Now, inpd)
    hh = DateDiff("h", Now, inpd)
    mm = DateDiff("n", Now, inpd)
    ss = DateDiff("s", Now, inpd)
    L4.Text = dd & "天" & (hh Mod 24) & "小時" & (mm Mod 60) & "分鐘" & (ss Mod 60) & "秒"
    Timer1.Enabled = True
End Sub
```

19

某日期倒數計時程式的變化(VB.NET)

```
Private Sub Timer1_Tick(ByVal sender As Object, ByVal e As System.EventArgs) Handles Timer1.Tick
    dd = DateDiff("d", Now, inpd)
    hh = DateDiff("h", Now, inpd)
    mm = DateDiff("n", Now, inpd)
    ss = DateDiff("s", Now, inpd)
    L4.Text = dd & "天" & (hh Mod 24) & "小時" & (mm Mod 60) & "分鐘" & (ss Mod 60) & "秒"
End Sub
```

20